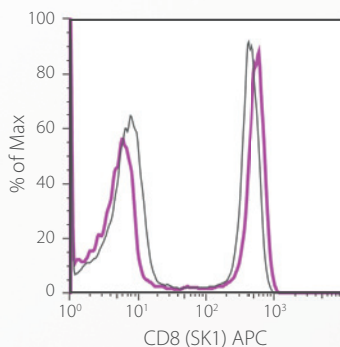


Quality First. Value Always.

Clinically appropriate reagents optimized for the immunophenotyping of hematologic malignancies in the **clinical flow cytometry** environment.

CE-IVD REAGENTS

Industry leading quality



Correlation to industry
standard

- **Leading Edge, Established Clones** – rapidly expanding portfolio of relevant specificities
- **Outstanding Signal : Noise** – exceptional quality reagents manufactured to the highest standards. Outstanding brightness and greater than 90% purity for all formats
- **Uncompromising Quality** – manufactured to industry-leading tolerances
- **More per Vial** – packaged with 20% more product (120 tests) than the leading competitor at a price that's about 20% less
- **Optimized for Multicolor Immunophenotyping** – 5µL/test provides optimal volume for multicolor applications; 25 test sizes make assay evaluation easy
- **Flexibility** – compatible with all flow cytometers in various sizes
- **Established Reputation** – eBioscience reagents cited in over 16,000 publications in the past 10 years

Designed with the needs of today's clinical flow cytometry lab in mind, eBioscience Clinical reagents represent our commitment to delivering **state-of-the-art tools at the price you need.**

Scientists have long recognized that our reagents represent an outstanding value.

Isn't it time you made the switch?


DIAGNOSTICS

Laser (Excitation)		Violet (405 nm)	Blue (488 nm)					Red (633 nm)		
Emission		eFluor® 450 (450 nm)	FITC (518 nm)	PE (575 nm)	PerCP (675 nm)	PerCP-Cy5.5 (690 nm)	PerCP-eFluor® 710 (710 nm)	PE-Cy7 (785 nm)	APC (660 nm)	APC-eFluor® 780 (780 nm)
Specificity	Clone	Cat. No.	Cat. No.	Cat. No.	Cat. No.	Cat. No.	Cat. No.	Cat. No.	Cat. No.	Cat. No.
CD1a	SK9			9012-0017						
CD2	RPA-2.10	9048-0029	9011-0029	9012-0029			9046-0029		9017-0029	
CD3	SK7	9048-0036	9011-0036		9043-0036	9045-0036			9017-0036	9047-0036
CD4	SK3	9048-0047	9011-0047	9012-0047	9043-0047		9046-0047		9017-0047	9047-0047
CD5	L17F12		9011-0058			9045-0058			9017-0058	
CD7	4H9		9011-0078						9017-0078	
CD8	SK1		9011-0087	9012-0087	9043-0087				9017-0087	9047-0087
CD9	SN4	9048-0098								9047-0098
CD10	SN5c		9011-0108	9012-0108				9025-0108	9017-0108	9047-0108
CD11b	ICRF44			9012-0118					9017-0118	
CD11c	3.9						9046-0116		9017-0116	
CD13	WM15			9012-0138			9046-0138	9025-0138		
CD14	61D3			9012-0149	9043-0149		9046-0149		9017-0149	9047-0149
CD15	MMA	9048-0158	9011-0158							
CD16	CB16	9048-0168	9011-0168	9012-0168				9025-0168		
CD19	SJ25C1					9045-0198	9046-0198	9025-0198	9017-0198	9047-0198
CD20	2H7	9048-0209	9011-0209		9043-0209					
CD21	HB5	9048-0219								
CD22	s-HCL-1						9046-4229		9017-4229	
CD23	EBVCS2		9011-0238							
CD24	SN3									9047-0247
CD25	CD25-4E3			9012-0257						
CD27	O323		9011-0279							
CD28	CD28.2			9012-0289					9017-0289	
CD30	Ber-H2			9012-0309						
CD33	P67.6	9048-0337	9011-0337	9012-0337			9046-0337		9017-0337	
CD34	4H11 (APG)			9012-0349					9017-0349	
CD36	NL07		9011-0369							
CD38	HB7		9011-0388	9012-0388						9047-0388
CD39	A1			9012-0399						
CD41 (CD41a)	HIP8		9011-0419							
CD44	IM7		9011-0441							
CD45	2D1	9048-9459			9043-9459	9045-9459				9047-9459
CD45RO	UCHL-1							9025-0457		
CD45RA	HI100							9025-0458	9017-0458	
CD56	CMSSB			9012-0567					9017-0567	
CD57	TB01		9011-0577							
CD61	VI-PL2		9011-0619							
CD64	10.1			9012-0649						
CD73	AD2		9011-0739							
CD79a	HM47					9045-0792	9046-0792			
CD79b	CB3-1						9046-0793			
CD99	3B2/TA8			9012-0997						
CD103	Ber-ACT8		9011-1037	9012-1037						
CD117	104D2			9012-1178			9046-1178	9025-1178	9017-1178	
CD123	6H6								9017-1239	
CD200	OX104								9017-9200	
CD279	J105			9012-2799						
FMC7	FMC7	9048-0206	9011-0206							
Foxp3	PCH101		9011-4776	9012-4776					9017-4776	
HLA-DR	L243	9048-9952		9012-9952			9046-9952	9025-9952		
Ig Kappa	TB28-2	9048-9970	9011-9970	9012-9970					9017-9970	
Ig Lambda	1-155-2		9011-9990	9012-9990						
Ki67	20Raj1		9011-5699							
ZAP-70 (1E7.2)	1E7.2			9012-6695						
ZAP-70 (2F3.2)	2F3.2			9012-9945						
Isotype Control										
mIgG1, kappa	P3.6.2.8.1	9048-4714	9011-4714	9012-4714		9045-4714		9025-4714	9017-4714	
mIgG2a, kappa	eBM2a	9048-4724	9011-4724	9012-4724		9045-4724		9025-4724	9017-4724	
mIgG2b, kappa	eBMG2b	9048-4732	9011-4732	9012-4732					9017-4732	
mIgM	11E10	9048-4752	9011-4752							