

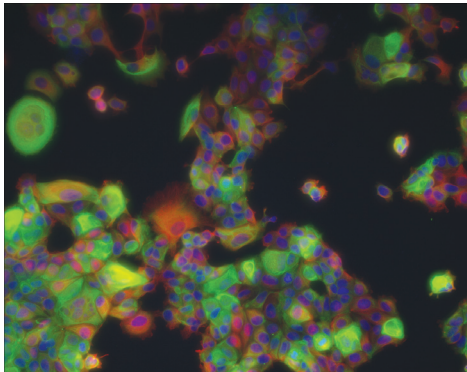
Cancer Research

New Reagents for Cancer Research

Elucidation of the causes and treatment of cancer remains a formidable challenge in modern medicine. Although there have been significant advances in our understanding of the underlying biology of cancer, much remains poorly understood. Cancer has extraordinarily

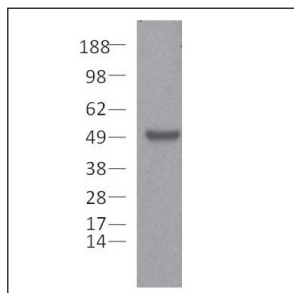
diverse features with respect to causation, underlying pathology, clinical symptoms and therapeutic response. eBioscience offers a broad offering of reagents to support your cancer research needs.

Multi-Color Immunocytochemistry



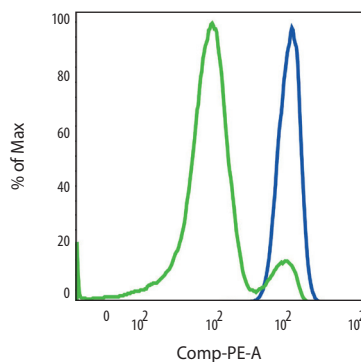
Immunocytochemistry on MCF-7 cells, using Alexa Fluor® 488 anti-Pan Cytokeratin (cat. no. 53-9003; green), biotin anti- α Tubulin (cat. no. 13-4502) followed by Streptavidin eFluor® 605NC (cat. no. 93-2317; red), and 10 nM Nuclear RED (DRAQ5™) nuclear stain (cat. no. 65-0880; blue), 20X.

Human Pax5



Daudi cell lysates prepared under reducing conditions were resolved by SDS-PAGE then immunoblotted with 2 μ g/ml of anti-mouse/human Pax5 antibody (cat. no. 14-9918). Bands were visualized using HRP-conjugated anti-rat IgG.

Mouse Pax5



Surface staining of C57Bl/6 splenocytes with PE-Cy7 anti-mouse CD23 (cat. no. 25-0232) and FITC anti-mouse CD21/35 (cat. no. 11-0211) followed by intracellular staining using the Foxp3 Staining Buffer Set (cat. no. 00-5523) and 0.125 μ g of PE anti-mouse/human Pax5. Histogram depicts cell populations based on surface stains comprising the marginal zone cells (CD21^{high}, CD23⁻) (blue histogram) or T1 cells (CD21⁻, CD23⁻) (green histogram).

2010 | April

FEATURING

FLOWCYTOMIX™ MULTIPLEX ANALYTE DETECTION KITS

- sCD44var (v6) NEW
- sE-Selectin NEW
- sP-Selectin NEW
- RANTES NEW
- TGF- β 1 NEW

INSTANT ELISA® KITS

- sCD44var (v5) NEW
- sCD44std NEW
- sCD44var (v6) NEW
- sHER-2 NEW
- TGF- β 1 NEW
- Osteoprotegerin NEW

ANTIBODIES

- β -catenin (h, m) NEW
- Cytokeratin (h, m) NEW
- E-cadherin (h, m)
- N-cadherin (h)
- Delta-like 1 (m) NEW
- EpCAM (h, m)
- Jagged-1 (m)
- Jagged-2 (m)
- Notch-1 (h, m)
- Notch-3 (m)
- Notch-4 (m)
- Pax5 (h, m) NEW

h=human, m=mouse

Cancer Research Markers

Mouse Antibodies	Clone	Cat. No.	Applications	Purified	Functional Grade™ Purified	Biotin	Functional Grade™ Biotin	eFluor® 450	eFluor® 605NC	eFluor® 650NC	FITC	Alexa Fluor® 488	PE	PE-Cy5	PE-Cy7	PerCP-Cy5.5	PerCP-eFluor® 710	APC	Alexa Fluor® 647	Alexa Fluor® 700	APC-eFluor® 780	
B7-H1	MIH5	5982	FC, FA, IHC	•	•	•							•									
β-catenin	15B8	2567	ICFC, WB, IP	•																•		
Cytokeratin-acidic	AE1	9001	WB, IHC	•																		
Cytokeratin-basic	AE3	9000	IHC, WB	•																		
Cytokeratin-pan	AE1/AE3	9003	IHC	•																		
Delta-like 1 (DLL-1)	HMD1-5	5767	FC, IHC, FA	•	•							•	•									
EpCAM	G8.8	5791	FC, IHC, IP	•		•							•		•			•				
E-Cadherin	DECMA-1	3249	FC, FA, WB, IHC, IP, ELISA	•		•											•		•			
Jagged-2	HMJ2-1	3392	FC			•																
Notch-1	mN1A	5785	ICFC, WB, IHC	•										•								
Notch-3	HMN3-133	5763	FC											•								
Notch-4	HMN4-14	5764	FC											•								
Nur77	12.14	5964	ICFC, WB	•										•								
Pax5	1H9	9918	ICFC, IHC, IP, WB	•										•								
SLP-76	MS76	7761	ICFC, WB	•							•											
SSEA-1	eBioMC-480	8813	FC, IHC, IP	•		•				•		•	•							•		
SSEA-3	eBioMC-631	8833	FC, IHC	•		•		•				•	•									
ZAP-70	1E7.2	6695	ICFC, WB, IP	•		•					•		•			•						
Human Antibodies	Clone	Cat. No.	Applications																			
ABCG2/Bcrp1	5D3	8888	FC	•	•	•							•									
B7-H1	MIH1	5983	FC, FA, IHC	•	•	•							•		•			•				
BAMBI	4E8	5826	FC	•		•							•									
Bcl-2	BI-2/100	1028	WB	•																		
E-Cadherin	DECMA-1	3249	FC, FA, WB, IHC, IP, ELISA	•		•											•		•			
N-Cadherin	8C11	3259	FC, WB, IHC, IP	•		•							•					•				
β-catenin	15B8	2567	ICFC, WB, IP	•																•		
Cytokeratin-acidic	AE1	9001	WB, IHC	•																		
Cytokeratin-basic	AE3	9000	IHC, IHC, WB	•																		
Cytokeratin-pan	AE1/AE3	9003	IHC	•																		
CD171	5G3	1719	FC, IHC, IP, WB	•									•									
EpCAM	1B7	9326	FC, IHC, IP, WB	•		•							•				•		•			
Ki-67	20Raj1	5699	IHC	•																		
MDR1	UIC2	2439	FC, FA		•								•									
Pax5	1H9	9918	ICFC, IHC, IP, WB	•									•									
RASSF1A	eB114-10H1	6888	WB, IP	•																		
SLP-76	HS76	7769	ICFC, WB	•						•												
SSEA-1	eBioMC-480	8813	FC, IHC, IP	•		•				•		•	•							•		
SSEA-3	eBioMC-631	8833	FC, IHC	•		•		•				•	•									
SSEA-4	eBioMC-813-70	8843	FC, IHC	•		•						•	•									
TARP	clone TP1	8868	WB, IHC	•																		
TCL1	eBio1-21	6699	ICFC, WB, IHC	•									•					•		•		
TRA-1-60	TRA-1-60	8863	FC, IHC, IP, WB	•		•							•									
ZAP-70	1E7.2	6695	ICFC, WB, IP	•		•					•		•			•						

APPLICATION KEY: FC = Flow Cytometry; ICFC = Intracellular Staining/Flow Cytometry; IHC = Immunohistochemistry; IHC/F = IHC (Frozen); IHC/P = IHC (Paraffin); IHC/PF = IHC (Paraffin & Frozen); BA = Bioassay; FA = Functional Activity; ELISA (c) = ELISA capture; ELISA (d) = ELISA detection; ELISPOT (c) = ELISPOT capture; ELISPOT (d) = ELISPOT detection; WB = Western Blot; IP = Immunoprecipitation; NU = Neutralizing

FlowCytomix™ Multiple Analyte Detection Kits for Human Proteins

Product	Cat. No.	Description
sCD44var (v6)	BMS80210FF	Simplex Kit
sE-Selectin	BMS8205FF	Simplex Kit
sP-Selectin	BMS8219/2FF	Simplex Kit
TGF-β1	BMS8249FF	Simplex Kit

Instant ELISA® Kits for Human Proteins

Product	Cat. No.	Description
sCD44std	BMS209INST	Instant ELISA® Kit
sCD44var (v5)	BMS220INST	Instant ELISA® Kit
sCD44var (v6)	BMS210INST	Instant ELISA® Kit
sHER-2	BMS207INST	Instant ELISA® Kit

Apoptosis Detection Kits for Human and Mouse

Product	Cat. No.	Applications
Annexin V-eFluor® 450 Apoptosis Detection Kit	8006	FC
Annexin V-APC Apoptosis Detection Kit	8007	FC
Annexin V-FITC Apoptosis Detection Kit	8005	FC
Apo-BrdU Apoptosis Detection Kit	6671	FC
Apo-Direct Apoptosis Detection Kit	6611	FC

APPLICATION KEY: FC = Flow Cytometry

All designated trademarks used are the property of their respective owners.

TOLL FREE 888.999.1371 | TEL 858.642.2058 | FAX 858.642.2046 | contact@eBioscience.com | www.eBioscience.com

Q110020 Cancer_3_10