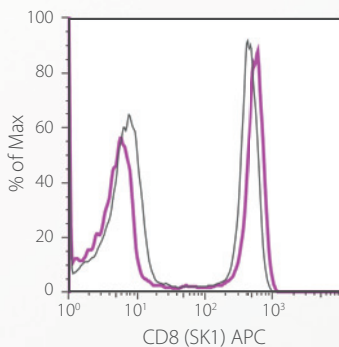


Quality First. Value Always.

Clinically appropriate reagents optimized for today's **clinical flow cytometry** environment.

ASR REAGENTS

Industry leading quality



Correlation to industry
standard

- **Leading Edge, Established Clones** – rapidly expanding portfolio of relevant specificities
- **Outstanding Signal : Noise** – exceptional quality reagents manufactured to the highest standards. Outstanding brightness and greater than 90% purity for all formats
- **Uncompromising Quality** – manufactured to industry-leading tolerances
- **Concentrated Format**– packaged with 20% more product (5µL/test, 120 tests per vial) than the leading competitor at a price that's about 20% less
- **Flexibility** – compatible with all flow cytometers in various sizes
- **Established Reputation** – eBioscience reagents cited in over 16,000 publications in the past 10 years

Designed with the needs of today's clinical flow cytometry lab in mind, eBioscience Clinical reagents represent our commitment to delivering **state-of-the-art tools at the price you need.**

Scientists have long recognized that our reagents represent an outstanding value.

Isn't it time you made the switch?


DIAGNOSTICS

www.eBioscience.com

ORDER 888.999.1371 • ASR TECH 877.726.8559 • INQUIRIES Dx@eBioscience.com

Analyte Specific Reagent (ASR). Analytical and performance characteristics are not established. Q411034a_ASRLPF_v1_1011

Laser (Excitation)		Violet (405 nm)	Blue (488 nm)					Red (633 nm)		
Emission		eFluor® 450 (450 nm)	FITC (518 nm)	PE (575 nm)	PerCP (675 nm)	PerCP-Cy5.5 (690 nm)	PerCP-eFluor® 710 (710 nm)	PE-Cy7 (785 nm)	APC (660 nm)	APC-eFluor® 780 (780 nm)
Specificity	Clone	Cat. No.	Cat. No.	Cat. No.	Cat. No.	Cat. No.	Cat. No.	Cat. No.	Cat. No.	Cat. No.
CD1a	SK9			8012-0017						
CD2	RPA-2.10	8048-0029	8011-0029	8012-0029			8046-0029		8017-0029	
CD3	SK7	8048-0036	8011-0036		8043-0036	8045-0036			8017-0036	8047-0036
CD4	SK3	8048-0047	8011-0047	8012-0047	8043-0047		8046-0047		8017-0047	8047-0047
CD5	L17F12		8011-0058			8045-0058			8017-0058	
CD7	4H9		8011-0078						8017-0078	
CD8	SK1		8011-0087	8012-0087	8043-0087				8017-0087	8047-0087
CD9	SN4	8048-0098								8047-0098
CD10	SN5c		8011-0108	8012-0108				8025-0108	8017-0108	8047-0108
CD11b	ICRF44			8012-0118					8017-0118	
CD11c	3.9						8046-0116		8017-0116	
CD13	WM15			8012-0138			8046-0138	8025-0138		
CD14	61D3			8012-0149	8043-0149		8046-0149		8017-0149	8047-0149
CD15	MMA	8048-0158	8011-0158							
CD16	CB16	8048-0168	8011-0168	8012-0168				8025-0168		
CD19	SJ25C1					8045-0198	8046-0198	8025-0198	8017-0198	8047-0198
CD20	2H7	8048-0209	8011-0209		8043-0209					
CD21	HB5	8048-0219								
CD22	s-HCL-1						8046-4229		8017-4229	
CD23	EBVCS2		8011-0238							
CD24	SN3									8047-0247
CD25	CD25-4E3			8012-0257						
CD27	O323		8011-0279							
CD28	CD28.2			8012-0289					8017-0289	
CD30	Ber-H2			8012-0309						
CD33	P67.6	8048-0337	8011-0337	8012-0337			8046-0337		8017-0337	
CD34	4H11 (APG)			8012-0349					8017-0349	
CD36	NL07		8011-0369							
CD38	HB7		8011-0388	8012-0388						8047-0388
CD39	A1			8012-0399						
CD41 (CD41a)	HIP8		8011-0419							
CD44	IM7		8011-0441							
CD45	2D1	8048-9459			8043-9459	8045-9459				8047-9459
CD45RO	UCHL-1							8025-0457		
CD45RA	HI100							8025-0458	8017-0458	
CD56	CMSSB			8012-0567					8017-0567	
CD57	TB01		8011-0577							
CD61	VI-PL2		8011-0619							
CD64	10.1			8012-0649						
CD73	AD2		8011-0739							
CD79a	HM47					8045-0792	8046-0792			
CD79b	CB3-1						8046-0793			
CD99	3B2/TA8			8012-0997						
CD103	Ber-ACT8		8011-1037	8012-1037						
CD117	104D2			8012-1178			8046-1178	8025-1178	8017-1178	
CD123	6H6								8017-1239	
CD200	OX104								8017-9200	
CD279	J105			8012-2799						
FMC7	FMC7	8048-0206	8011-0206							
Foxp3	PCH101		8011-4776	8012-4776					8017-4776	
HLA-DR	L243	8048-9952		8012-9952			8046-9952	8025-9952		
Ig Kappa	TB28-2	8048-9970	8011-9970	8012-9970					8017-9970	
Ig Lambda	1-155-2		8011-9990	8012-9990						
Ki67	20Raj1		8011-5699							
ZAP-70 (1E7.2)	1E7.2			8012-6695						
ZAP-70 (2F3.2)	2F3.2			8012-9945						
Isotype Control										
mIgG1, kappa	P3.6.2.8.1	8048-4714	8011-4714	8012-4714		8045-4714		8025-4714	8017-4714	
mIgG2a, kappa	eBM2a	8048-4724	8011-4724	8012-4724		8045-4724		8025-4724	8017-4724	
mIgG2b, kappa	eBMG2b	8048-4732	8011-4732	8012-4732					8017-4732	
mIgM	11E10	8048-4752	8011-4752							